

Living with post-traumatic stress

The impact of symptoms on everyday life

As reported by 724 members of PatientsLikeMe's post-traumatic stress (PTS) community

Time of PTS event vs. diagnosis

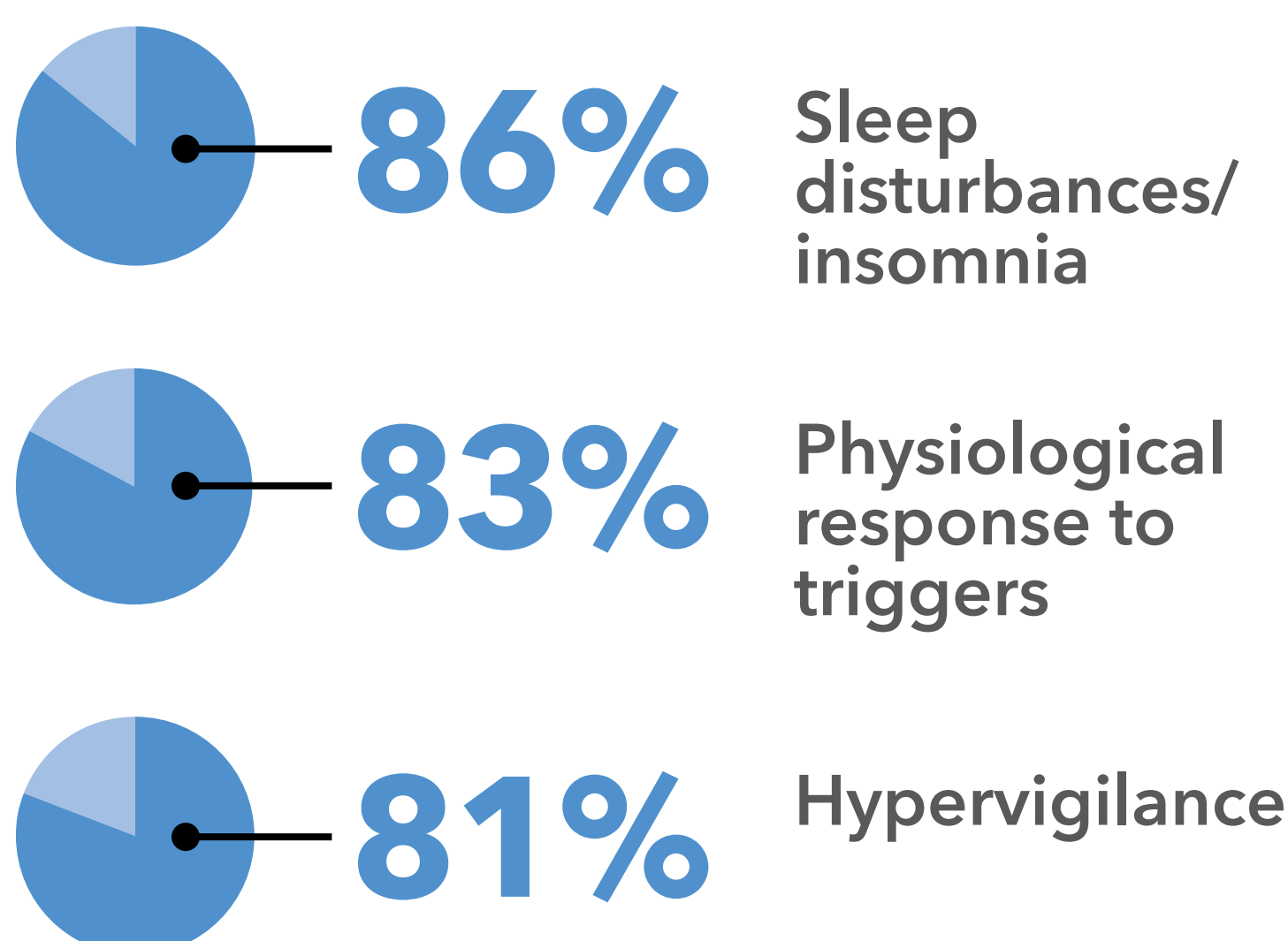
While members typically experienced their first PTS event

25 years ago...

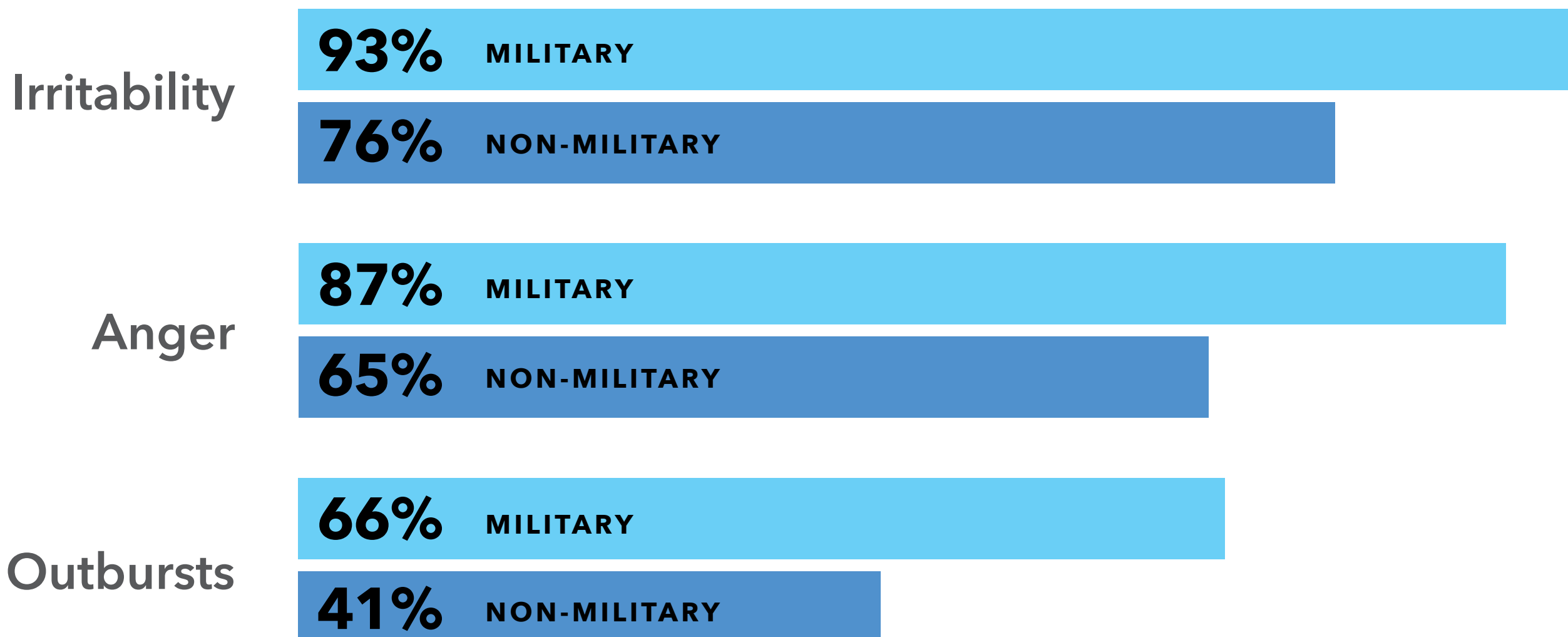
...they didn't receive a diagnosis until

15 years later

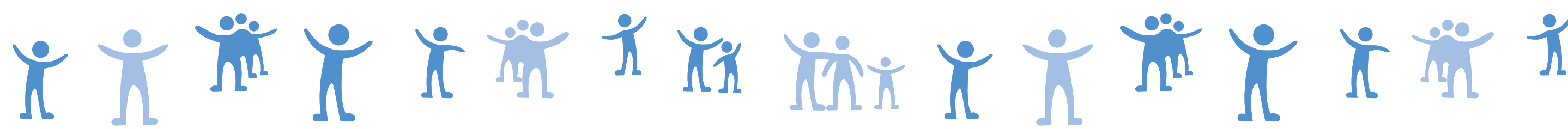
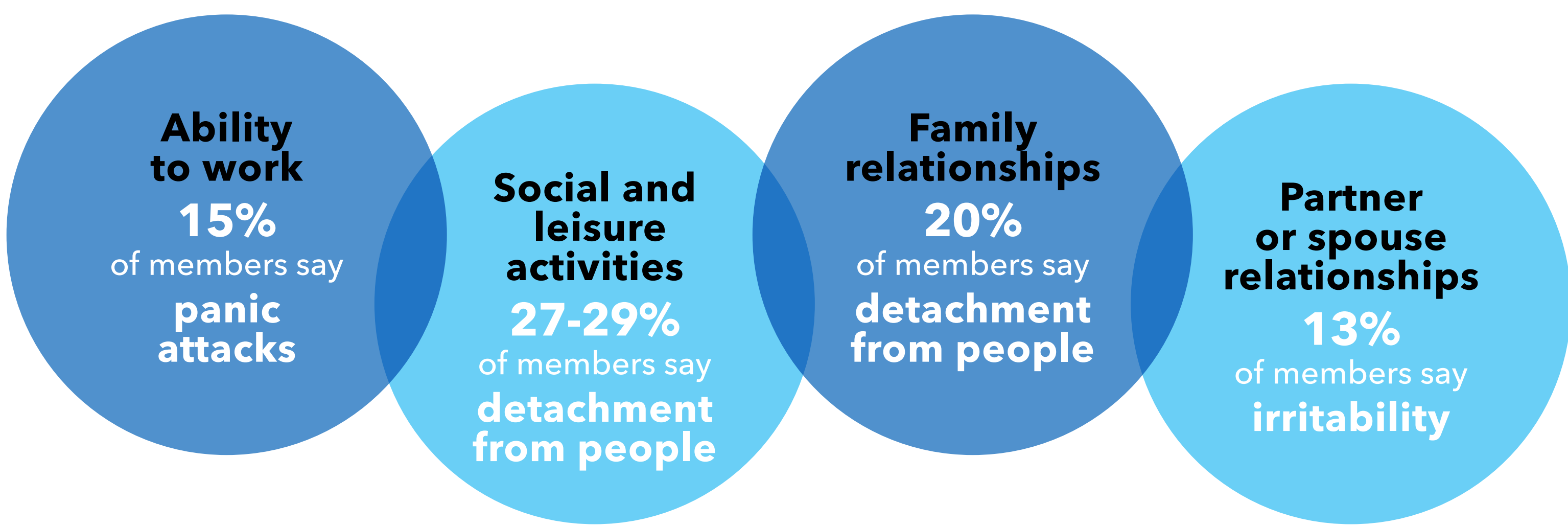
What are the most commonly experienced PTS symptoms?



How PTS symptoms are experienced by military vs. non-military members



What PTS symptoms most negatively impact these key areas of life?



What PTS symptoms do members most want under control?

